

# GRESHAM ST PAUL'S

Floor plans

# GROUND FLOOR PLAN

Office (sq ft)  
**3,240**

Retail (sq ft)  
**2,950**

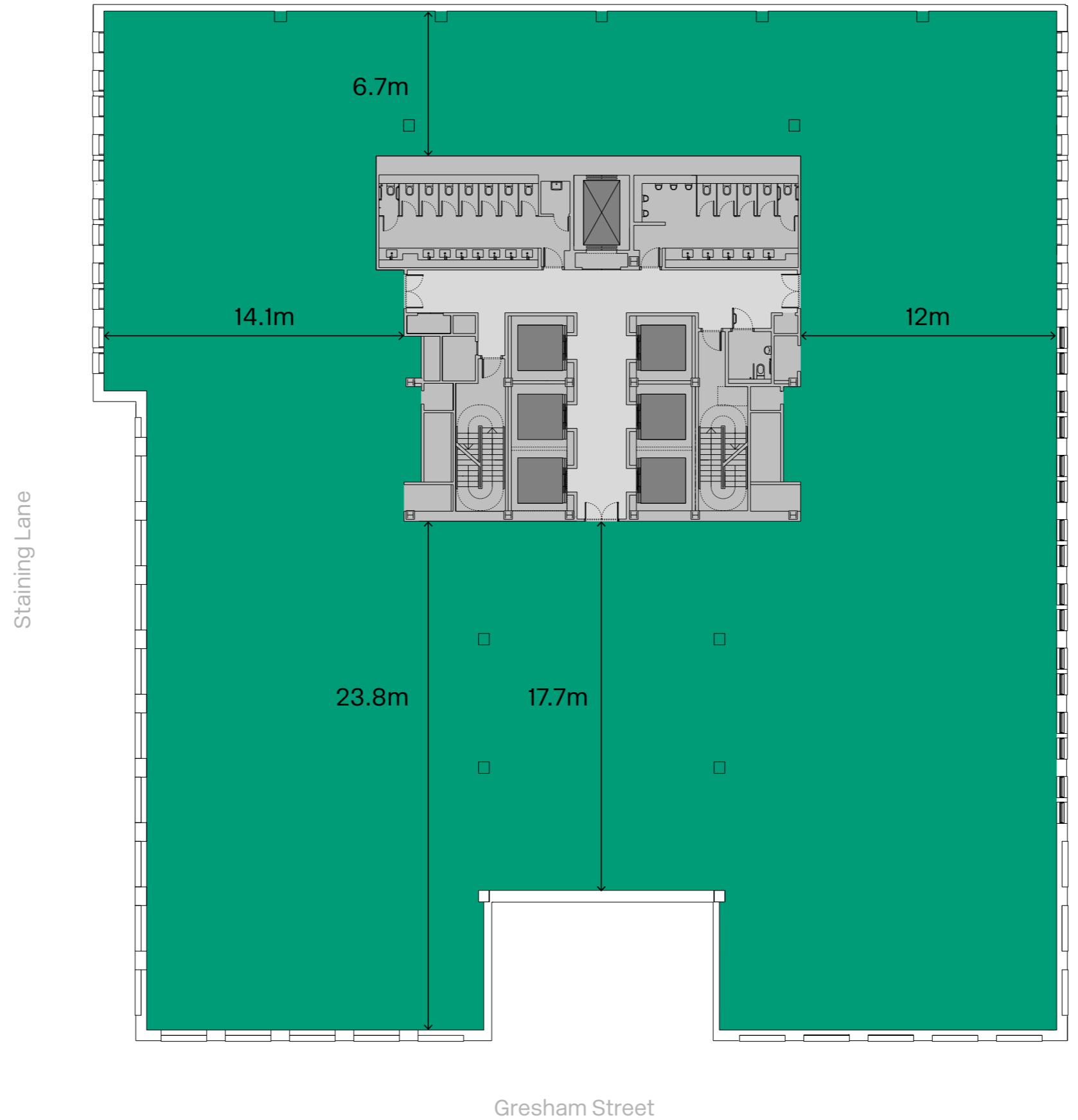
Reception & café (sq ft)  
**6,205**



- Office
- Retail
- Reception, Café & Lounge

# FIRST FLOOR PLAN

Office (sq ft)  
**18,125**

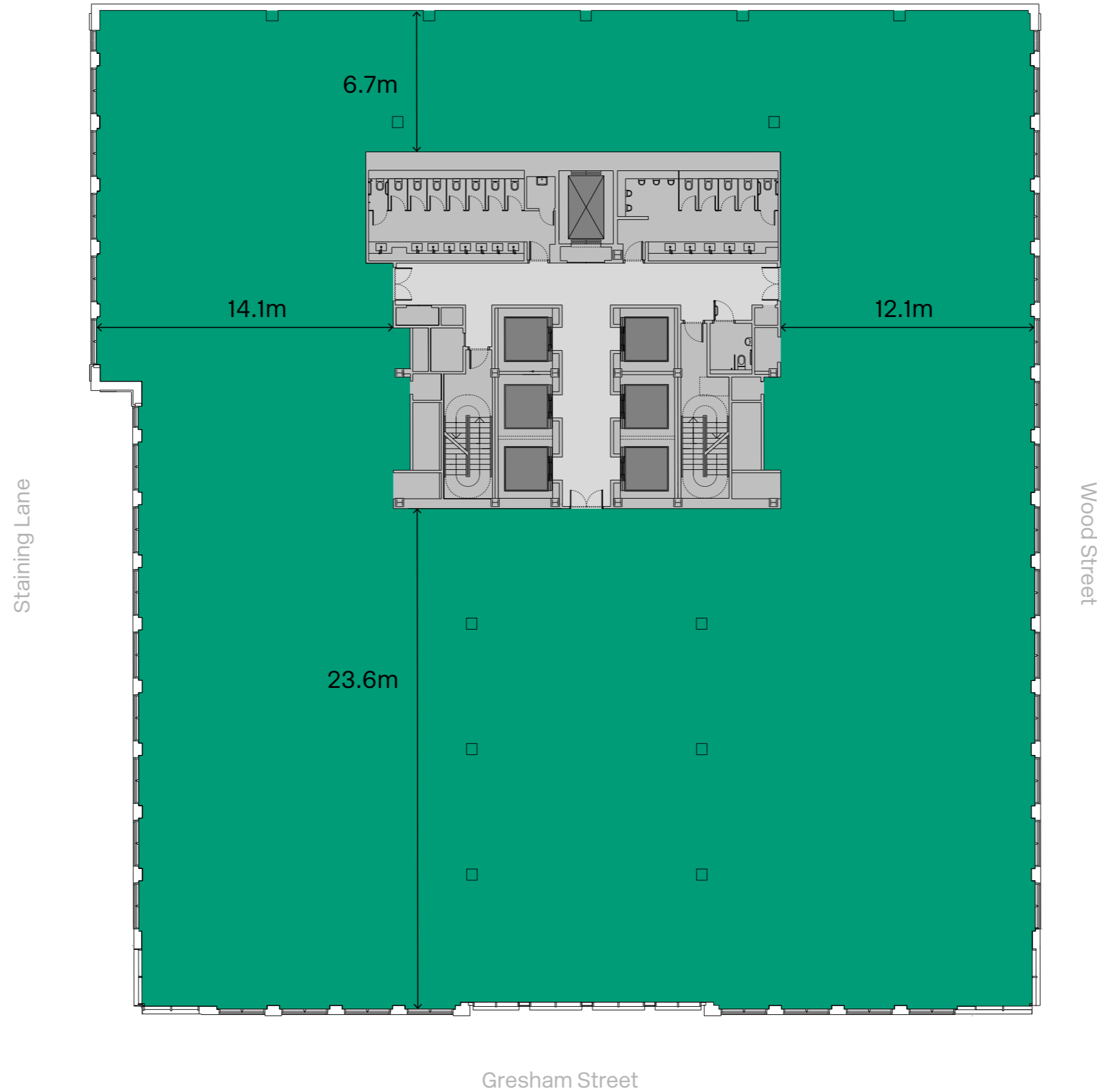


● Office

# SECOND – SIXTH FLOOR

## TYPICAL OFFICE

Office (sq ft)  
**18,860**

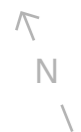
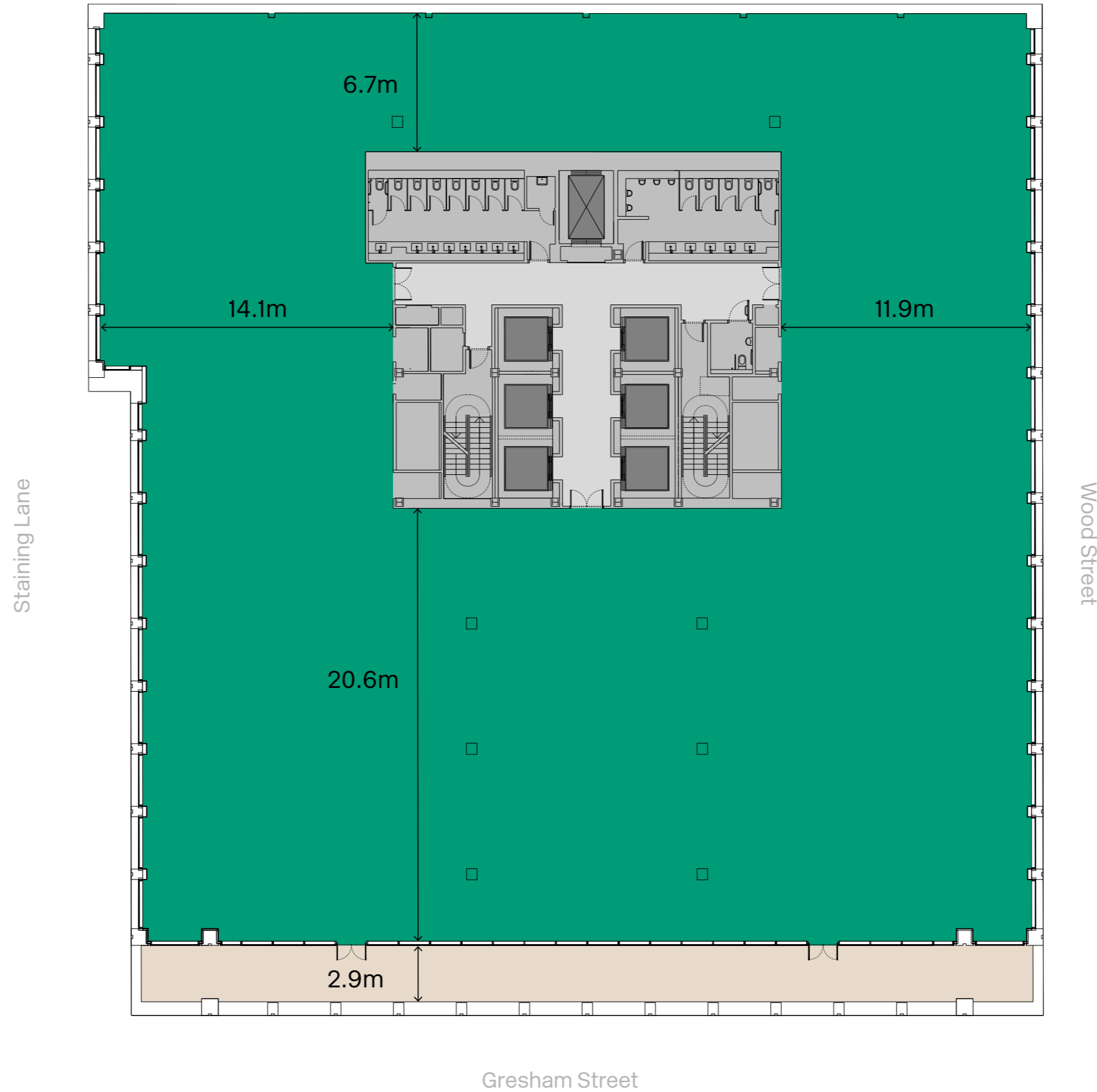


● Office

# SEVENTH FLOOR PLAN

Office (sq ft)  
**17,030**

Terrace (sq ft)  
**1,572**

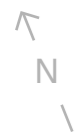
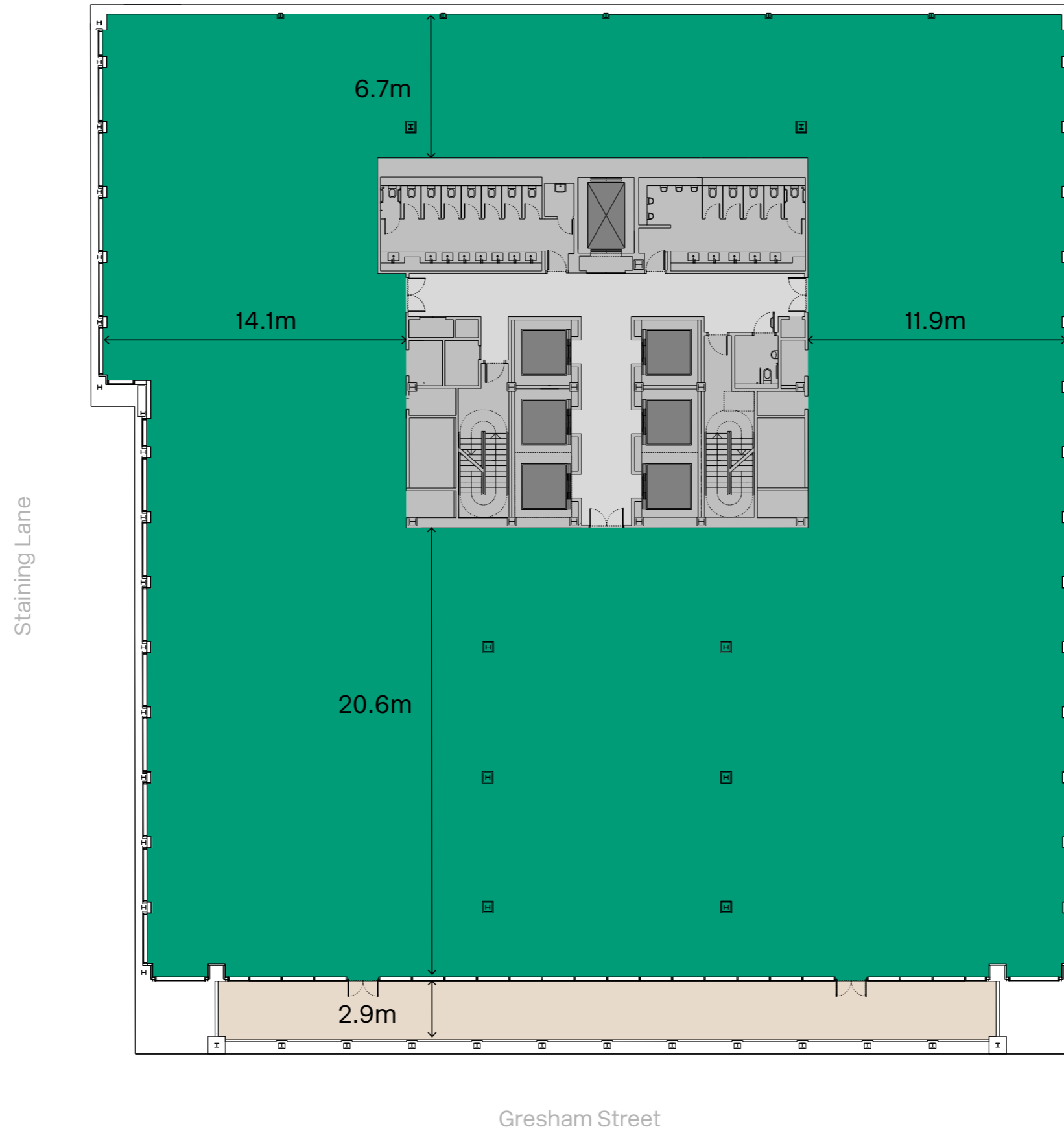


● Office  
● Terrace

# EIGHTH FLOOR PLAN

Office (sq ft)  
**17,060**

Terrace (sq ft)  
**1,324**

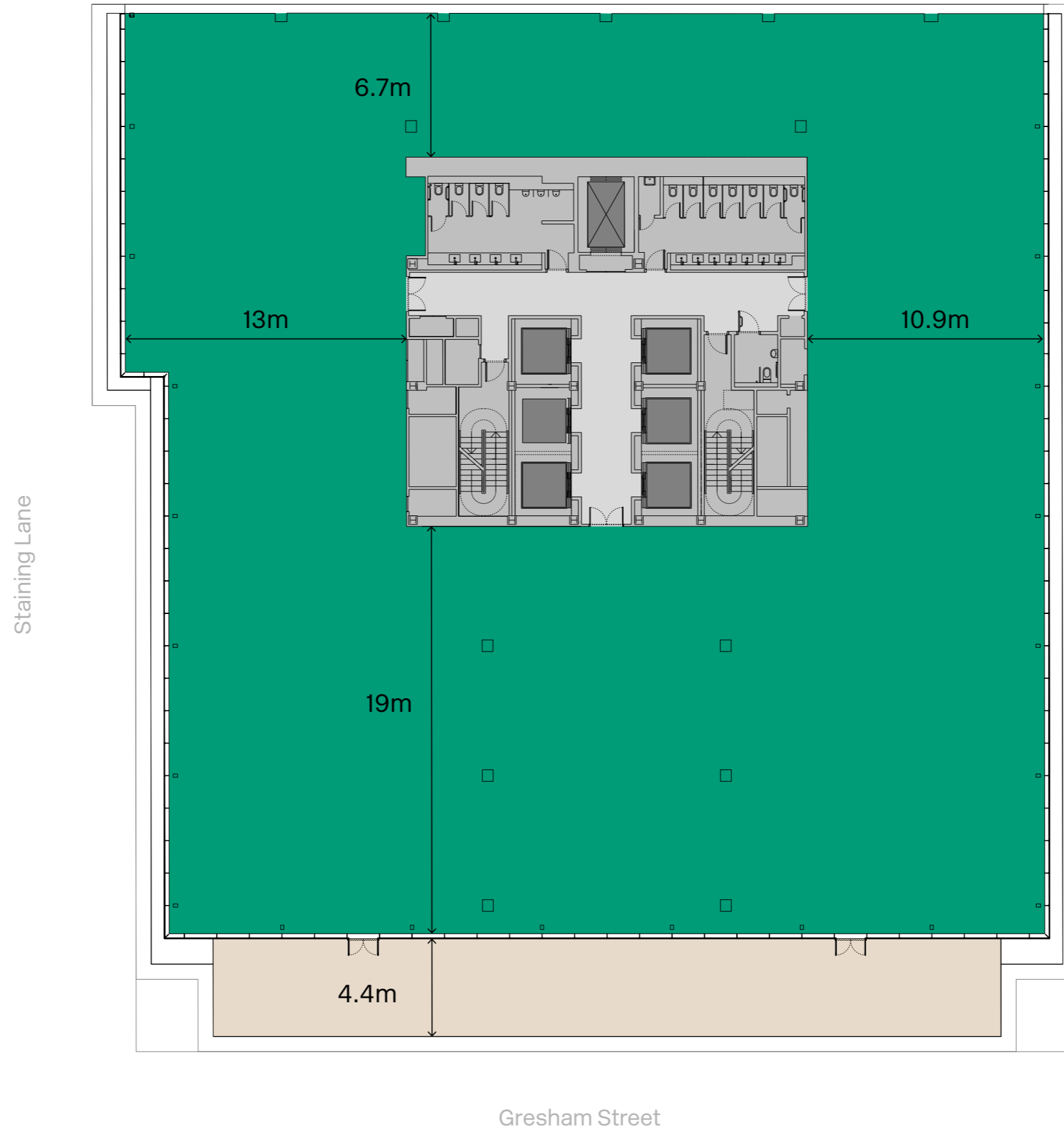


● Office  
● Terrace

# NINTH FLOOR PLAN

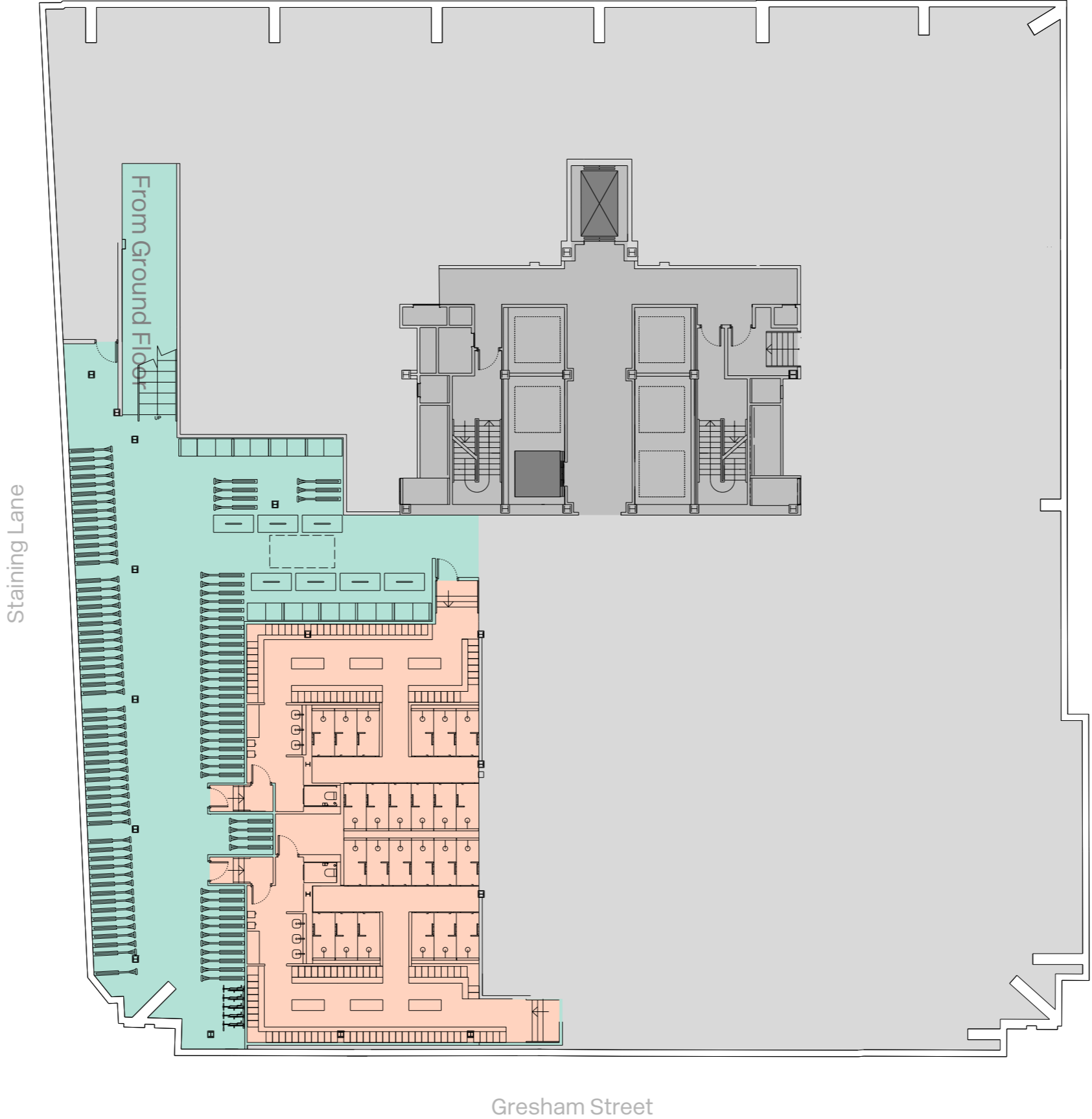
Office (sq ft)  
**15,555**

Terrace (sq ft)  
**2,680**



● Office  
● Terrace

# LOWER GROUND FLOOR PLAN



Amenities	
bike spaces	254
lockers	254
showers	25

- Bike store
- Changing rooms

